

2008 UK Product List

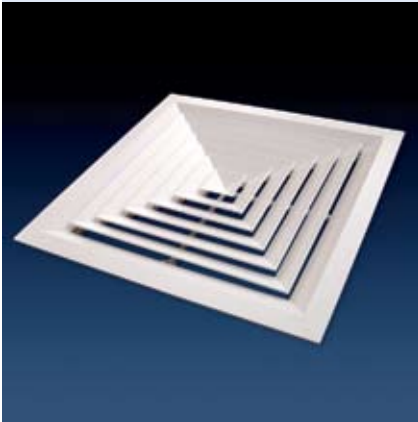
Unit 16/17 Enterprise Court
Park Farm Industrial Estate
Wellingborough Northants
ENGLAND NN8 6UW

Telephone: 01933 402 666
Facsimile: 01933 402 777

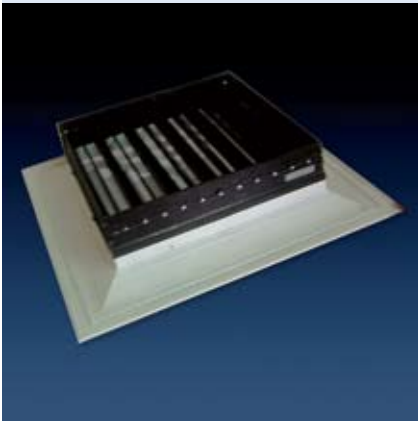
sales@polyaireuk.demon.co.uk
www.polyaire.co.uk



Multi Louvre Face Diffuser - 4 Way Blow



Multi Louvre Face Diffuser with OBD



METAL LOUVRE FACE DIFFUSER (LFD)

FOUR WAY BLOW

PART NO #	SIZE mm
248001	150 x 150
248002	225 x 225
248003	300 x 300
248004	375 x 375
248005	450 x 450 (595 x 595 face)

METAL LOUVRE FACE DIFFUSER (LFD)

FOUR WAY BLOW WITH OBD

PART NO #	SIZE mm
248001/6	150 x 150
248002/7	225 x 225
248003/8	300 x 300
248004/9	375 x 375
248005/10	450 x 450 (595 x 595 face)

Multi Louvre Face Diffuser - 3 Way Blow



METAL LOUVRE FACE DIFFUSER (LFD)

THREE WAY BLOW

PART NO #	SIZE mm
248001/3W	150 x 150
248002/3W	225 x 225
248003/3W	300 x 300
248004/3W	375 x 375
248005/3W	450 x 450

METAL LOUVRE FACE DIFFUSER (LFD)

THREE WAY BLOW WITH OBD

PART NO #	SIZE mm
248001/6/3W	150 x 150
248002/7/3W	225 x 225
248003/8/3W	300 x 300
248004/9/3W	375 x 375
248005/10/3W	450 x 450

Multi Louvre Face Diffuser - 2 Way Blow



METAL LOUVRE FACE DIFFUSER (LFD)

TWO WAY BLOW

PART NO #	SIZE mm
248001/2W	150 x 150
248002/2W	225 x 225
248003/2W	300 x 300
248004/2W	375 x 375
248005/2W	450 x 450

METAL LOUVRE FACE DIFFUSER (LFD)

TWO WAY BLOW WITH OBD

PART NO #	SIZE mm
248001/6/2W	150 x 150
248002/7/2W	225 x 225
248003/8/2W	300 x 300
248004/9/2W	375 x 375
248005/10/2W	450 x 450

Multi Louvre Face Diffuser - 1 Way Blow



METAL LOUVRE FACE DIFFUSER (LFD)

ONE WAY BLOW

PART NO #	SIZE mm
248001/1W	150 x 150
248002/1W	225 x 225
248003/1W	300 x 300
248004/1W	375 x 375
248005/1W	450 x 450

METAL LOUVRE FACE DIFFUSER (LFD)

ONE WAY BLOW WITH OBD

PART NO #	SIZE mm
248001/6/1W	150 x 150
248002/7/1W	225 x 225
248003/8/1W	300 x 300
248004/9/1W	375 x 375
248005/10/1W	450 x 450

Outside Air Louvre



OUTSIDE AIR LOUVRE

PART NO #	SIZE mm
244403	150 x 150
244000	200 x 200
244001	250 x 250
244002	300 x 300
244004	400 x 400
244244	500 x 500
244247	600 x 600

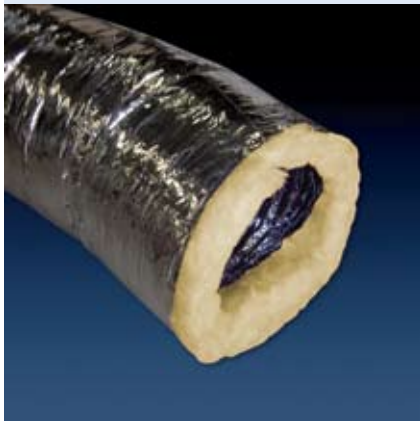
Metallized Core

Uninsulated Duct

- Metallized Outer Surface
- Fire Rated 4254-2002
- Operating Temperature: -20°C to +80°C
- Operation Pressure: -190pa to +1200pa
- General Use: Exhaust and ventilation systems



Firebreak Metallized Insulated



METALIZED FLEXIBLE DUCTING

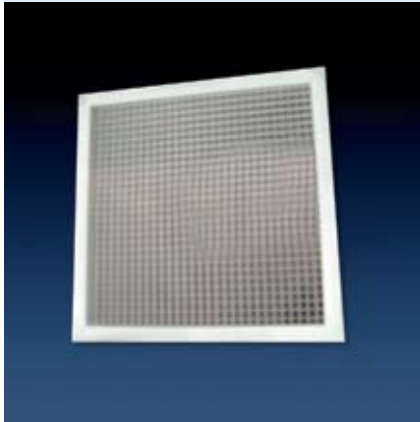
FIRE BREAK METALIZED CORE - 10 METRES LONG BOXED

PART NO #	SIZE mm
I60074/10	100mm
I60075/10	150mm
I60076/10	200mm
I60077/10	250mm
I60078/10	300mm

**FIRE BREAK METALIZED INSULATED 16kg/m³
- 10 METRES LONG BOXED**

PART NO #	SIZE mm
I10000/10	100mm
I10001/10	150mm
I10003/10	200mm
I10005/10	250mm
I10007/10	300mm
I10009/10	350mm
I10011/10	400mm

Egg Crate Fixed Core (EC-FC)



EGG CRATE

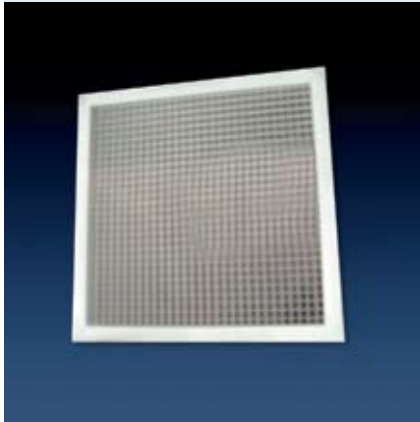
FIXED CORE (EC-FC) + OBD

PART NO #	SIZE mm
248593/6	150 x 150
248595/6E	200 x 200
248596/7E	250 x 250
248597/8	300 x 300
248598/9E	350 x 350
248603/10E	400 x 400
248604/10	450 x 450
248605/11E	500 x 500
248610/12E	595 x 595 (Face Size)

LOOSE CORE (EC-LC) + OBD

PART NO #	SIZE mm
248029/6	150 x 150
248030/6E	200 x 200
248031/7E	250 x 250
248032/8	300 x 300
248033/9E	350 x 350
248038/10E	400 x 400
248034/10	450 x 450
248572/11E	500 x 500
248035/12E	595 x 595 (Face Size)

Egg Crate Fixed Core (EC-FC)



EGG CRATE

FIXED CORE (EC-FC)

PART NO #	SIZE mm
248593	150 x 150
248595	200 x 200
248596	250 x 250
248597	300 x 300
248598	350 x 350
248603	400 x 400
248604	450 x 450
248605	500 x 500
248610	595 x 595 (Face Size)
248619	1195 x 595 (Face Size)

LOOSE CORE (EC-LC)

PART NO #	SIZE mm
248029	150 x 150
248030	200 x 200
248031	250 x 250
248032	300 x 300
248033	350 x 350
248038	400 x 400
248034	450 x 450
248572	500 x 500
248035	595 x 595 (Face Size)

Opposed Blade Dampers



OPPOSED BLADE DAMPERS

PART NO #	SIZE mm
248006	150 x 150
248006E	200 x 200
248007	225 x 225
248007E	250 x 250
248008	300 x 300
248009E	350 x 350
248009	375 x 375
248010E	400 x 400
248010	450 x 450
248010DB	450 x 450
248011E	500 x 500
248012E	550 x 550
248012	600 x 600

Plastic Extract & Supply Valve

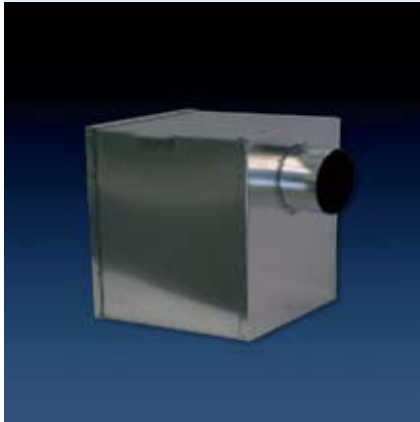


PLASTIC EXTRACT AND SUPPLY VALVES

WITH BACKING RING (PESV)

PART NO #	SIZE mm
990170	100
990171	125
990172	150
990173	200

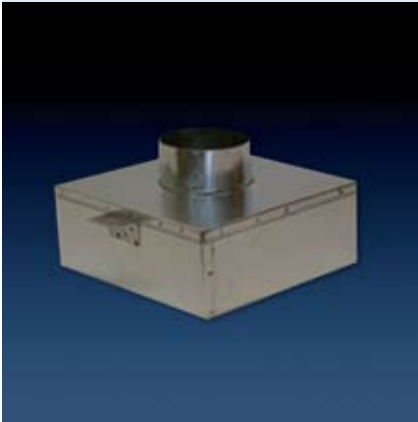
Metal Side or Top Entry Plenum Box



METAL SIDE OR TOP ENTRY PLENUM BOX

PART NO #	TOP/SIDE	SIZE	HEIGHT mm	SPIGOT
990144T	TOP	150 sq	300	Up to 148mm
990144S	SIDE	150 sq	300	Up to 148mm
990145T	TOP	200 sq	350	Up to 198mm
990145S	SIDE	200 sq	350	Up to 198mm
990146T	TOP	250 sq	350	Up to 248mm
990146S	SIDE	250 sq	350	Up to 248mm
990147T	TOP	300 sq	400	Up to 298mm
990147S	SIDE	300 sq	400	Up to 298mm
990148T	TOP	350 sq	450	Up to 348mm
990148S	SIDE	350 sq	450	Up to 348mm
990149T	TOP	400 sq	450	Up to 398mm
990149S	SIDE	400 sq	450	Up to 398mm
990150T	TOP	450 sq	500	Up to 448mm
990150S	SIDE	450 sq	500	Up to 448mm
990151T	TOP	500 sq	550	Up to 498mm
990150S	SIDE	500 sq	550	Up to 498mm
990152T	TOP	600 sq	600	Up to 498mm
990152S	SIDE	600 sq	600	Up to 498mm

Metal Top Entry Pan Adaptor



METAL TOP ENTRY PAN ADAPTORS

PART NO #	SIZE	HEIGHT mm	SPIGOT
990160T	150 sq	100	Up to 148mm
990161T	200 sq	100	Up to 198mm
990162T	250 sq	100	Up to 248mm
990163T	300 sq	100	Up to 298mm
990164T	350 sq	100	Up to 348mm
990165T	400 sq	100	Up to 398mm
990166T	450 sq	100	Up to 448mm
990167T	500 sq	100	Up to 498mm
990168T	600 sq	100	Up to 498mm
990169T	550 sq	100	200mm
990170T	550 sq	100	250mm

Multi Directional Outlet - Four Way



MULTI DIRECTIONAL OUTLETS

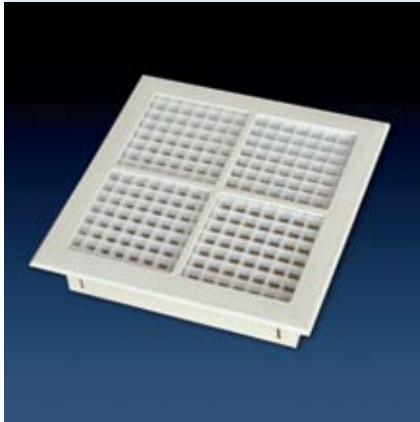
ADJUSTABLE BLADES

PART NO #	SIZE mm
231003	230 sq
231004	300 sq
231005	350 sq
231007	400 sq
231008	450 sq
231010	500 sq
231006	350 x 525 - 6 way

FIXED BLADE

PART NO #	SIZE mm
231011	230 sq
231012	300 sq
231013	350 sq
231014	400 sq
231015	450 sq
231017	500 sq
231081	350 x 525 - 6 way
231053	T-Bar Frame Only

Egg Crate Grille - Four Piece



Polyaire Return Air Grille



EGG CRATE GRILLE

PART NO #	SIZE mm
231074	350 x 350 Four Piece
231075	350 x 525 Six Piece
231076	595 x 595 Lay In T Bar
231753A	230 sq One Piece
231753B	230 sq Two Piece
231753C	230 sq Four Piece

RETURN AIR GRILLE

PART NO #	SIZE mm
231500	390 x 250
231504	460 x 250
231501	390 x 460
231505	460 x 460
231502	390 x 680
231506	460 x 680
231503	390 x 890
231507	460 x 890

MDO-X Four Way



Avair Grille



Silent Air Grille - Plastic



MULTI DIRECTIONAL OUTLETS

PART NO #	SIZE mm	
231201	300 sq	4 Way
231202	350 sq	4 Way
231203	400 sq	4 Way
231204	450 sq	4 Way
231205	525 x 350	6 Way

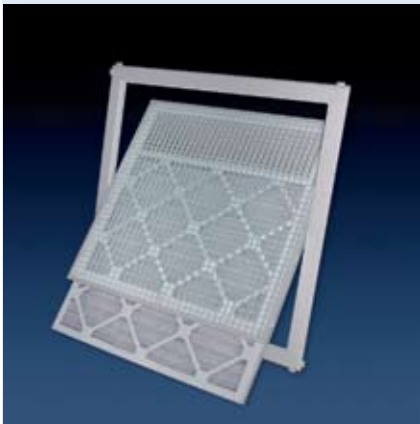
AVAIR GRILLE

PART NO #	SIZE mm
231001	350 FACE 200-250

SILENTAIR DIFFUSER

PART NO #	SIZE mm
231082	595 x 595 Silent Air
231053	T Bar Frame Only

Return Air Grille with Disposable Filter



Return Air Grille
• Hinged Core
• Slide Out Filter



RETURN AIR GRILLE WITH DISPOSABLE FILTER

PLASTIC

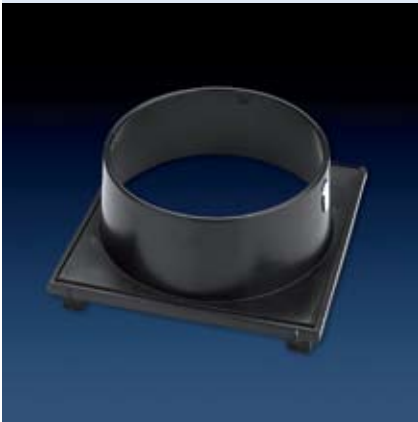
PART NO #	SIZE mm
231508	595 x 595 sq

METAL

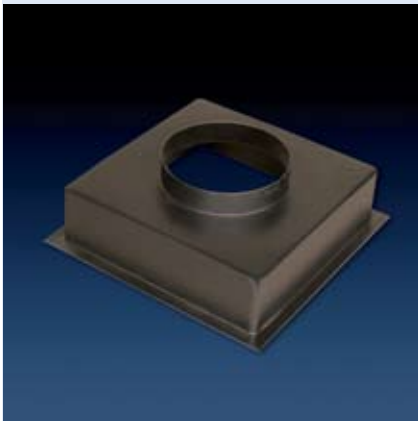
PART NO #	SIZE mm
247207	595 x 595 sq

23461	Replacement filter for 231508 white
TBA	Replacement filter for 247207 white

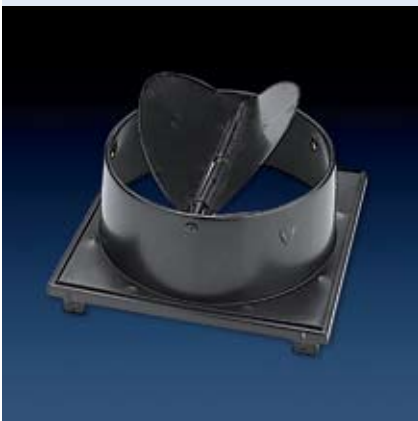
Polyaire Neck Adaptor



Flange Fitting



Polyaire Neck Adaptor - With Damper



NECK ADAPTORS

CLIP FITTING

PART NO #	SIZE mm
431056	230 x 150
431057	230 x 200
431058	300 x 200
431059	300 x 250
431060	300 x 300
431061	350 x 300
431062	350 x 350
431063	400 x 350
431064	400 x 400
431065	450 x 400
990143	450 x 250
431066	450 x 450
431132	450 x 200
431133	500 x 200

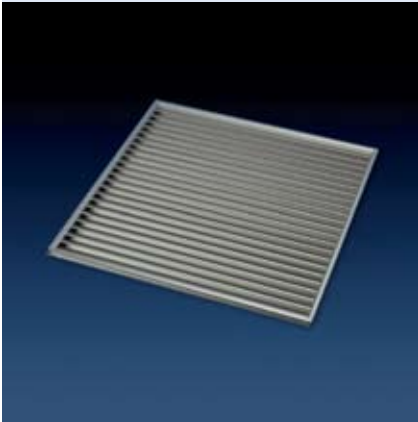
FLANGE FITTING

PART NO #	SIZE mm
990100	250 x 150
990101	250 x 200
990134	350 x 200
990135	400 x 200
990250	400 x 250
991080	450 x 200
991081	450 x 250
991085	460 x 150
991082	460 x 200
991083	460 x 250
990251	460 x 300
991060	500 x 200
990136	500 x 250
990137	500 x 300
991084	550 x 150
990138	550 x 200
990139	550 x 250
990140	550 x 300
990141	550 x 350
990142	550 x 400

NECK ADAPTORS + DAMPERS

PART NO #	SIZE mm
431067	230 x 150
431068	230 x 200
431069	300 x 200
431070	300 x 250
431071	350 x 300

Door Relief Grille



DOOR RELIEF GRILLE

PART NO #	SIZE mm
244234	300 x 150
244624	350 x 150
244240	400 x 150
244237	450 x 150
244021	600 x 150
244235	300 x 200
244625	450 x 200
244022	600 x 200
244626	450 x 250
244023	600 x 250
244236	300 x 300
244627	450 x 300
244024	600 x 300
244238	600 x 350
244026	600 x 400
244239	600 x 450
244028	600 x 600

Derby Ventilator



VENTILATOR

PART NO #	SIZE mm
867400	DERBY VENTILATOR 100mm
867401	DERBY VENTILATOR 150mm

Circular Heritage Outlet



CIRCULAR HERITAGE OUTLET

PART NO #	SIZE mm
231085	150
231086	200
231087	250
231088	300

Jet Diffuser



JET DIFFUSER

PART NO #	SIZE mm
231085J	150
231086J	200
231087J	250
231088J	300

Variable Round Outlet



VARIABLE ROUND OUTLET

PART NO #	SIZE mm
231077	150
231078	200

Multi Function 'Y'



Multi Function 'Y' - Insulated



Double Branch Take Off (DBTO)



MULTI FUNCTION 'Y'

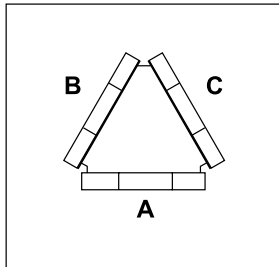
UNINSULATED

PART NO #	SIZE mm	
330648	200/150/150	Y1
330649	250-200/200-150/200-150	Y2
330650	300-250/250-200/250-200	Y3
330651	350-300/300-250/300-250	Y4
330652	400-350/350-300/350-300	Y5
330653	450-400/400-350/400-350-300	Y6
330654	500-450/450-400/450-400-350	Y7

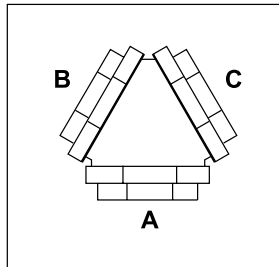
INSULATED

PART NO #	SIZE mm	
330641	200/150/150	Y1
330642	250-200/200-150/200-150	Y2
330643	300-250/250-200/250-200	Y3
330644	350-300/300-250/300-250	Y4
330645	400-350/350-300/350-300	Y5
330646	450-400/400-350/400-350-300	Y6
330647	500-450/450-400/450-400-350	Y7

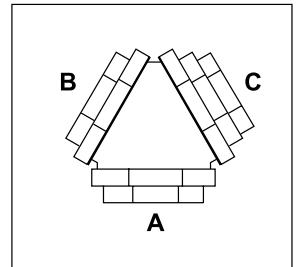
Y1



Y2 Y3 Y4 Y5



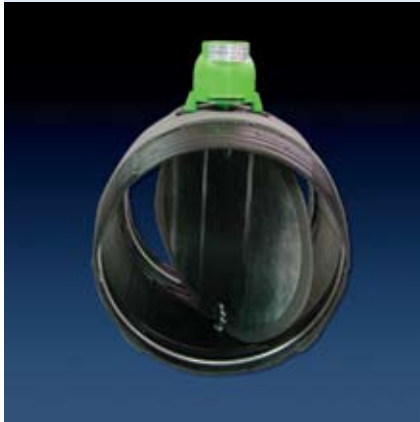
Y6 Y7



DOUBLE BRANCH TAKE OFF (DBTO)

PART NO #	SIZE mm	
330596	200/150/150/150	DB1
330597	250/150/150/150	DB2
330628	250/150/150/150/150	MF6

Motorised Damper



MOTORISED INLINE ZONE DAMPERS

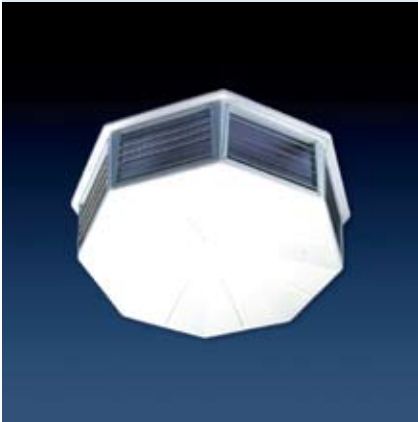
VOLTAGE 24V

PART NO #	SIZE mm
532012	150
532013	200
532014	250
532015	300
532016	350
532017	400

VOLTAGE 240V

PART NO #	SIZE mm
532000	150
532001	200
532002	250
532003	300
532004	350
532005	400

ACP 3 Plenum - 8 Way Metal



ACP 1 & 2 Plenum - 4 Way Metal

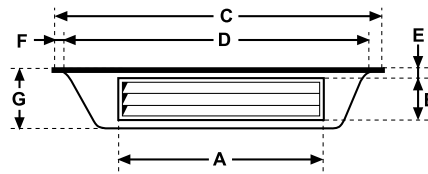


EVAPORATIVE PLENUM

PART NO #	SIZE mm
242624	ACP 1
242325	ACP 2
242626	ACP 3

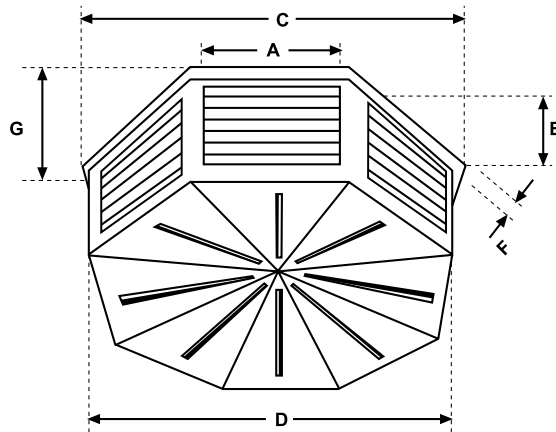
PLENUM PLATE

PART NO #	SIZE mm
242627	ACP 1
242628	ACP 2
242629	ACP 3



SIZE

- ACP 1 No.1. Up to 9,000 M³/H
- ACP 2 No.2. Up to 14,000 M³/H
- ACP 3 No.3. Up to 18,000 M³/H



MODEL DIMENSIONS	ACP 1	ACP 2	ACP 3
A	560	560	350
B	155	270	240
C	780	890	1100
D	720	820	960
E	30	30	40
F	30	35	35
G	170	290	310

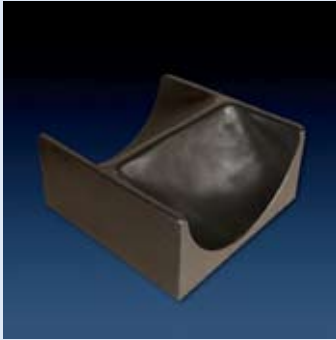
Reducer



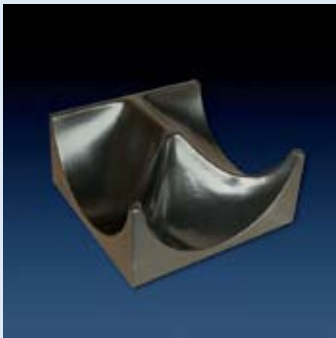
REDUCERS

PART NO #	SIZE mm
430634	200-150
430635	250-200
430636	300-250
430637	350-300
430638	400-350

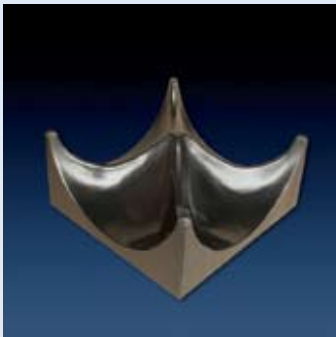
Superflow Insert - 2 Way



Superflow Insert - 3 Way



Superflow Insert - 4 Way



Relief Grille



SUPERFLOW INSERTS

PART NO #	SIZE mm	
430655	595 sq	2 Way
430656	595 sq	3 Way
430657	595 sq	4 Way

RELIEF GRILLE

PART NO #	SIZE mm
231079	525 x 350



BRANCH TAKE-OFF



**BRANCH TAKE-OFF
INSULATED**



**DOUBLE BRANCH TAKE-
OFF INSULATED**



**MULTI FUNCTION
DOUBLE BRANCH**



**MULTI-FUNCTION
'Y' FITTING**



**ADJUSTABLE MULTI-
DIRECTIONAL OUTLET
(MDO-X)**



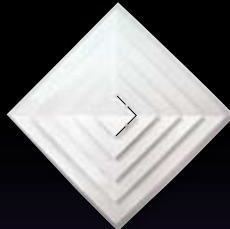
**CIRCULAR HERITAGE
OUTLET**



DOWNJET DIFFUSER



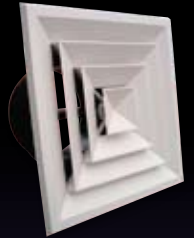
**MOTORISED METAL
BLADE DAMPER**



BEVEL FACE DIFFUSER



SECURITY RELIEF VENT



AVAIR DIFFUSER



**INSULATED FLEXIBLE
DUCT**



LAY-IN DIFFUSER



DERBY VENTILATOR

Get the latest information.
Visit us online at;

www.polyaire.co.uk